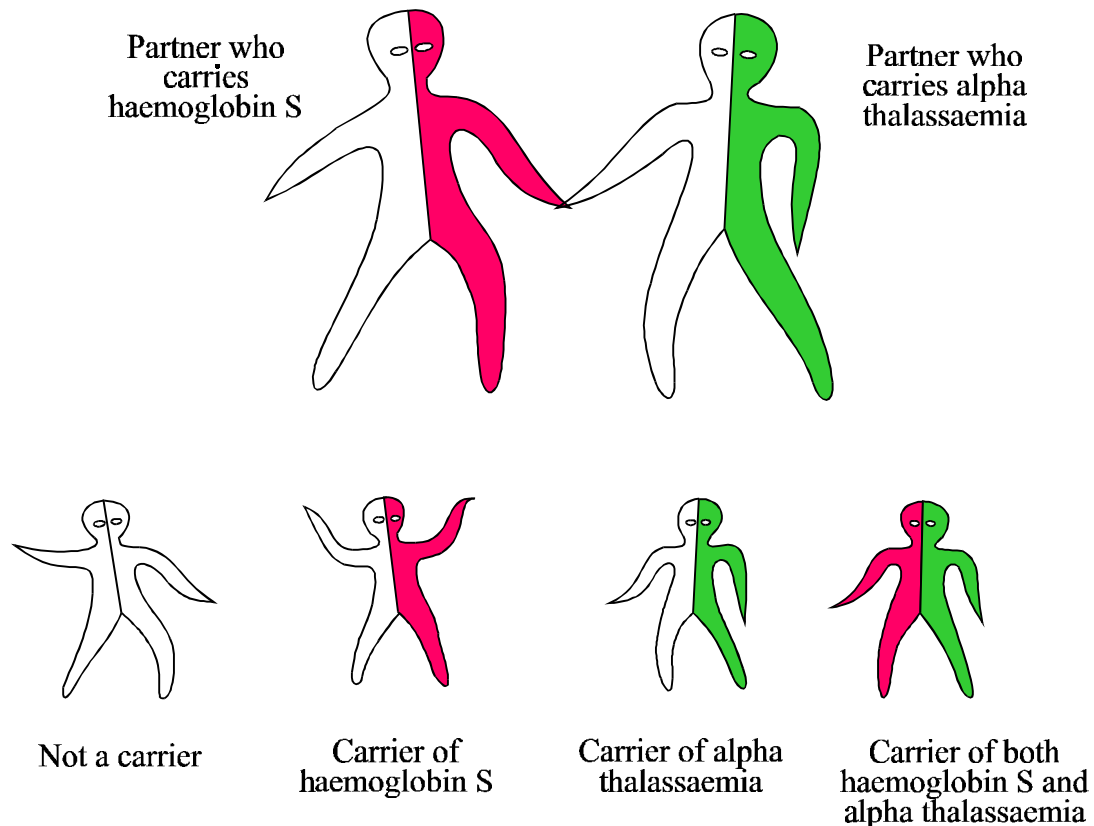


## Implications for a Child when One Partner carries Haemoglobin S (Sickle Cell) and the Other carries Alpha Thalassaemia (type unknown)

*There is no particular problem for this couple.* This combination cannot cause a serious inherited anaemia in their children.



*In each pregnancy*, there are four possibilities:

- The child may not carry any haemoglobin disorder.
- The child may carry alpha thalassaemia. This is harmless
- The child may carry haemoglobin S (sickle cell). This is harmless
- The child may inherit alpha thalassaemia from one parent and haemoglobin S from the other. This is harmless.

This couple has the same chance of a healthy family as other couples do.

*When the children grow up*, they should have blood test to see if they have inherited alpha thalassaemia or haemoglobin S. If they have, their partner should have a test "for haemoglobin disorders". It is important to remember this for the future.

*For more information about carrying haemoglobin disorders contact*