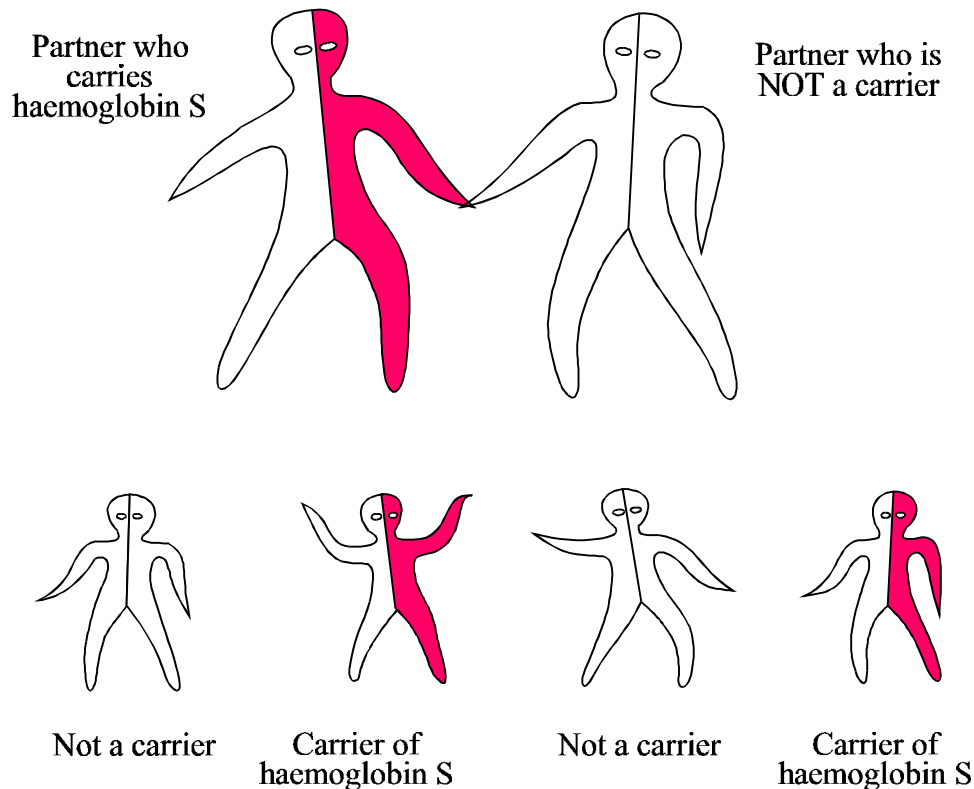


Implications for a Child when One Partner carries Haemoglobin S (Sickle Cell) and the Other does not carry any Haemoglobin Disorder

There is no particular problem for this couple. This combination cannot cause an inherited anaemia in their children.



In each pregnancy there are two possibilities:

- The child may not carry any haemoglobin disorder.
- The child may carry haemoglobin S (sickle cell). This is harmless.

The couple has the same chance of a healthy family as other couples do.

When the children grow up, they should have a blood test to see if they have inherited haemoglobin S. If they have, their partner should have a test "for haemoglobin disorders". It is important to remember this for the future.

To find out more about carrying haemoglobin disorders, contact: