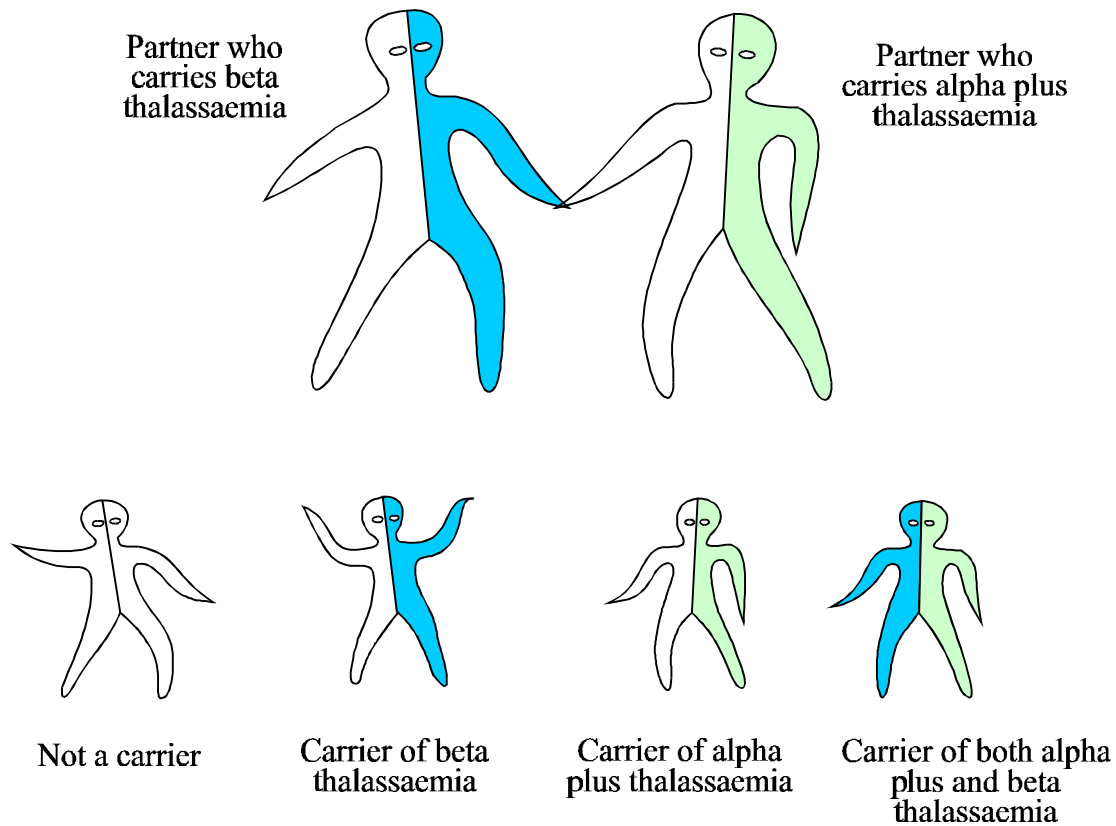


## Implications for a Child when One Partner carries Beta Thalassaemia and the Other carries Alpha Plus Thalassaemia

*There is no particular problem for this couple.* This combination cannot cause a serious inherited anaemia in their children.



*In each pregnancy,* there are four possibilities.

- The child may not be a carrier at all.
- The child may carry alpha plus thalassaemia. This is harmless.
- The child may carry beta thalassaemia. This is harmless.
- The child may inherit alpha plus thalassaemia from one parent and beta thalassaemia from the other. This is harmless.

This couple has the same chance of a healthy family as other couples do.

*When the children grow up,* they should have blood test to see if they have inherited beta thalassaemia. If they have, their partner should have a test "for haemoglobin disorders". It is important to remember this for the future.

*For more information about carrying haemoglobin disorders contact:*