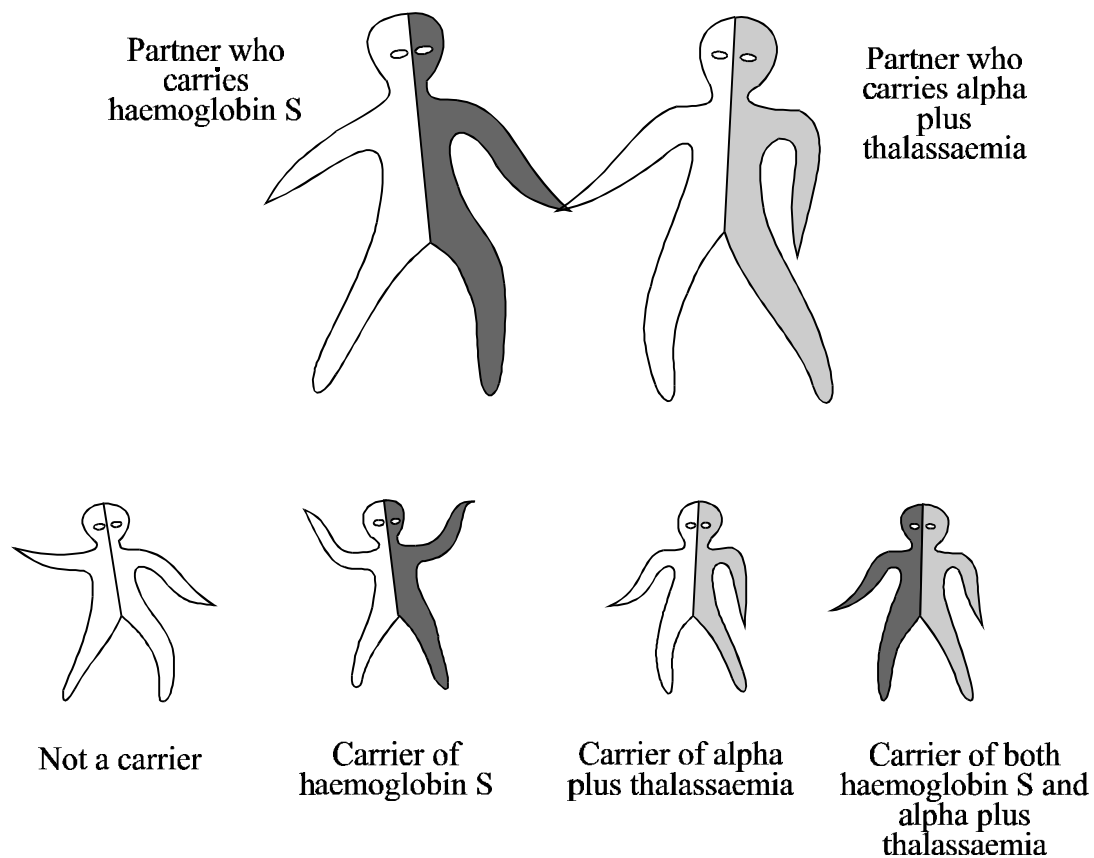


Implications for a Child when One Partner carries Haemoglobin S (Sickle Cell) and the Other carries Alpha Plus Thalassaemia

There is no particular problem for this couple. This combination cannot cause a serious inherited anaemia in their children.



In each pregnancy, there are four possibilities:

- The child may not carry any haemoglobin disorder.
- The child may carry alpha plus thalassaemia. This is harmless
- The child may carry haemoglobin S (sickle cell). This is harmless
- The child may inherit alpha plus thalassaemia from one parent and haemoglobin S from the other. This is harmless.

The couple has the same chance of a healthy family as other couples do.

When the children grow up, they should have blood test to see if they have inherited haemoglobin S. If they have their partner should have a test "for haemoglobin disorders". It is important to remember this for the future.

For more information about carrying haemoglobin disorders contact :