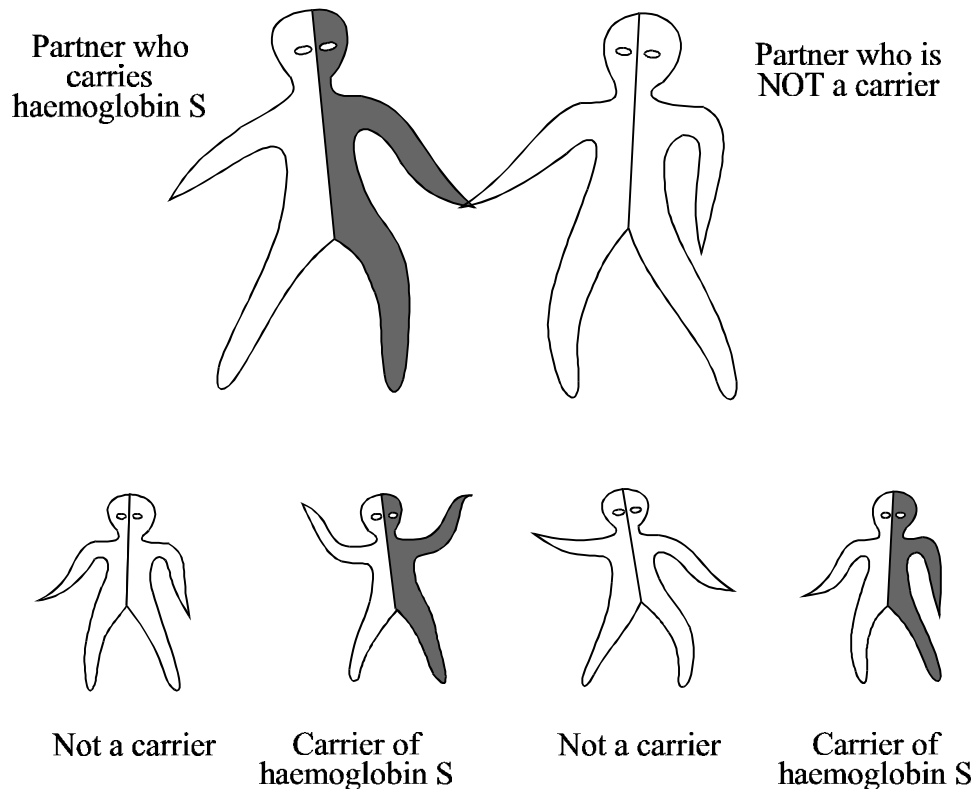


# Implications for a Child when One Partner carries Haemoglobin S (Sickle Cell) and the Other does not carry any Haemoglobin Disorder

*There is no particular problem for this couple.* This combination cannot cause an inherited anaemia in their children.



*In each pregnancy* there are two possibilities:

- The child may not carry any haemoglobin disorder.
- The child may carry haemoglobin S (sickle cell). This is harmless.

The couple has the same chance of a healthy family as other couples do.

**When the children grow up**, they should have a blood test to see if they have inherited haemoglobin S. If they have, their partner should have a test "for haemoglobin disorders". It is important to remember this for the future.

*To find out more about carrying haemoglobin disorders, contact:*