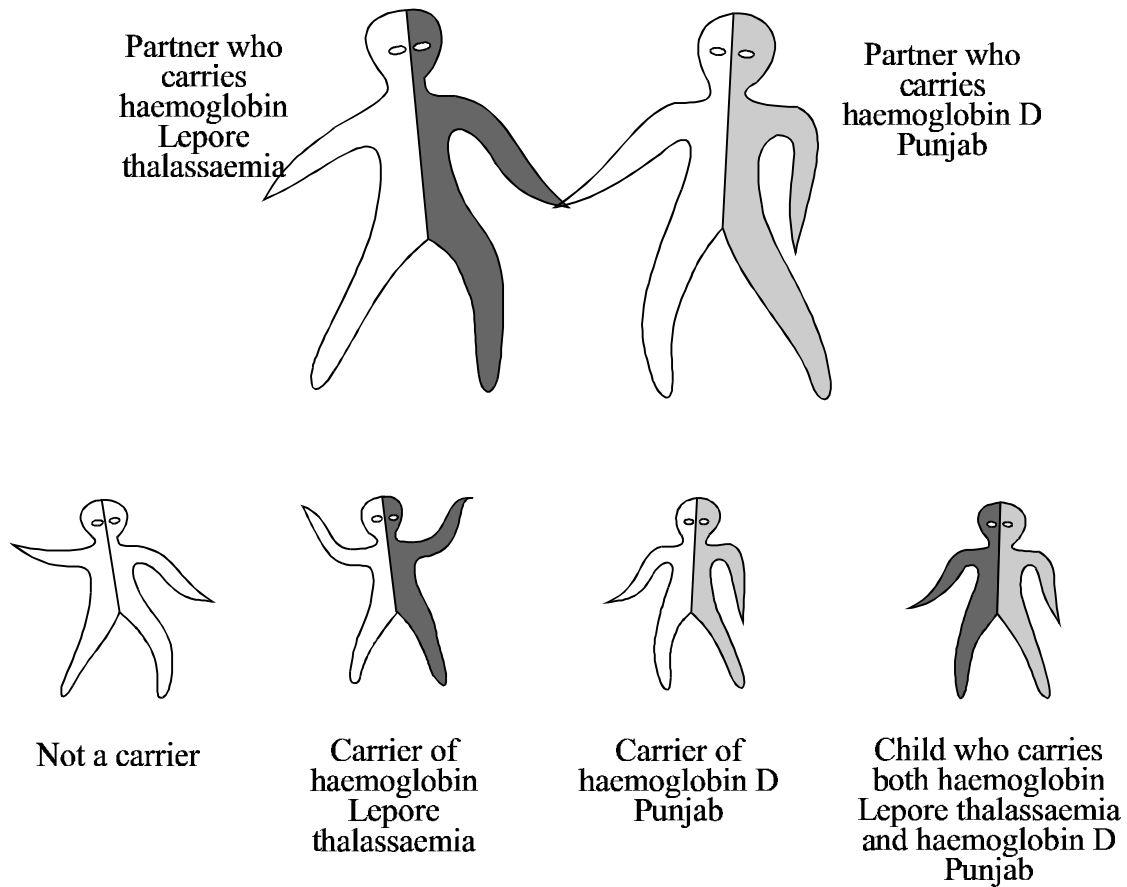


# Implications for a Child when One Partner carries Haemoglobin Lepore Thalassaemia and the Other carries Haemoglobin D Punjab

*There is no particular problem for this couple.* This combination cannot cause an inherited anaemia in their children.



*In each pregnancy,* there are four possibilities.

- The child may not carry any haemoglobin disorder.
- The child may carry haemoglobin Lepore thalassaemia. This is harmless.
- The child may carry haemoglobin D Punjab. This is harmless.
- The child may inherit haemoglobin Lepore thalassaemia from one parent and Haemoglobin D Punjab from the other. This is harmless.

This couple has the same chance of a healthy family as other couples do.

**When the children grow up,** they should have blood test to see if they have inherited haemoglobin Lepore thalassaemia or haemoglobin D Punjab. If they have, their partner should have a test "for haemoglobin disorders". It is important to remember this for the future.

*For more information about carrying haemoglobin disorders contact:*